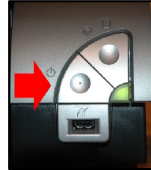


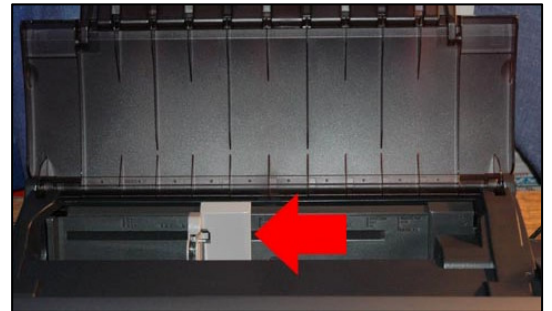
# The Canon i9900 Photo Printer

## Preparing the Printer

The computer should be on. Turn the printer on



Pinch the paper guide and slide it to the left to make room for the paper.



*Being careful not to touch the printing surface of the paper with your greasy, grimy fingers, place the paper in the printer vertically with the printing surface toward you. Slide the paper guide to the right to hold the paper in place.*

Note what kind of paper you are using:

- Photo Paper Pro
- Photo Paper Plus Glossy
- Matte Photo Paper
- Glossy Photo Paper

**If you are using 13" x 19" paper, put only one sheet of paper in the printer.**



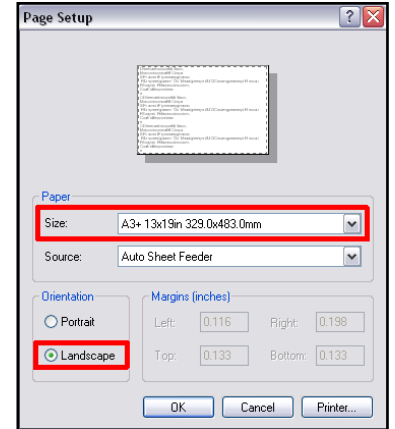
## Setting the Page Setup and Printer Properties

Open Photoshop Elements and choose **File, Page Setup** from the main menu.

In the Page Setup dialog box, choose the **paper size and orientation**.

The **paper size** will depend on the size of print you want:

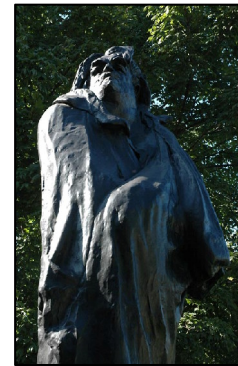
| Print Size | Paper Size  |
|------------|-------------|
| 4" x 6"    | 4x6in       |
| 5" x 7"    | Letter      |
| 8" x 10"   | Letter      |
| 11" x 14"  | A3+ 13x19in |
| 13" x 19"  | A3+ 13x19in |



The **orientation** depends on *the orientation of the image you are printing*, not the way the paper is placed in the printer.

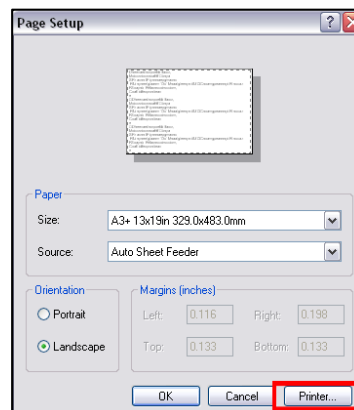


Landscape Orientation



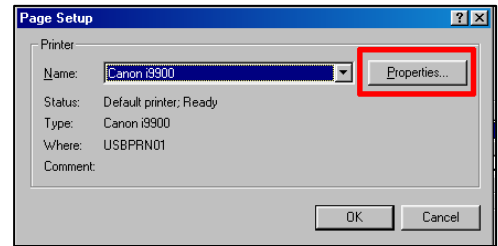
Portrait Orientation

Click on the **Printer** button.



You should see the name of the printer (in this case, Canon i9900) in the Printer dialog box.

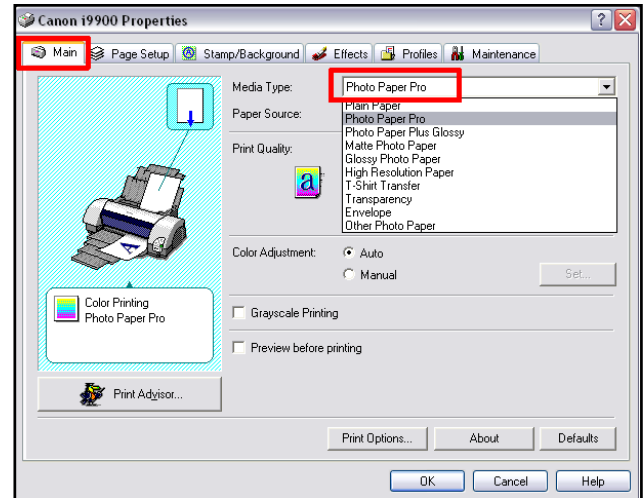
Click on **Properties**.



The Printer Properties dialog box should appear with the **Main** tab selected. Choose the **type of paper** you are using. This almost always will be **Photo Paper Pro**, the highest quality photo paper.

With Photo Paper Pro, the **Print Quality** automatically is set to **High**.

When you are through, click on **OK** a few times to close all the dialog boxes.



## Printing the Picture

Choose **File, Print** from the main menu.

You should see a preview of your picture on the left side of the window. If all has gone well, it should be located within the boundaries of the paper. The correct size of the print (in this case, Height = 11 inches and Width = 14 inches) should be displayed.

Click on **Print** to print the image.

